



BOEM BUREAU OF OCEAN
ENERGY MANAGEMENT

Gulf of Mexico Offshore Wind Energy Update

BOEM GOM Regional Office

Lissa Lyncker
Chief of Staff

October 16, 2024

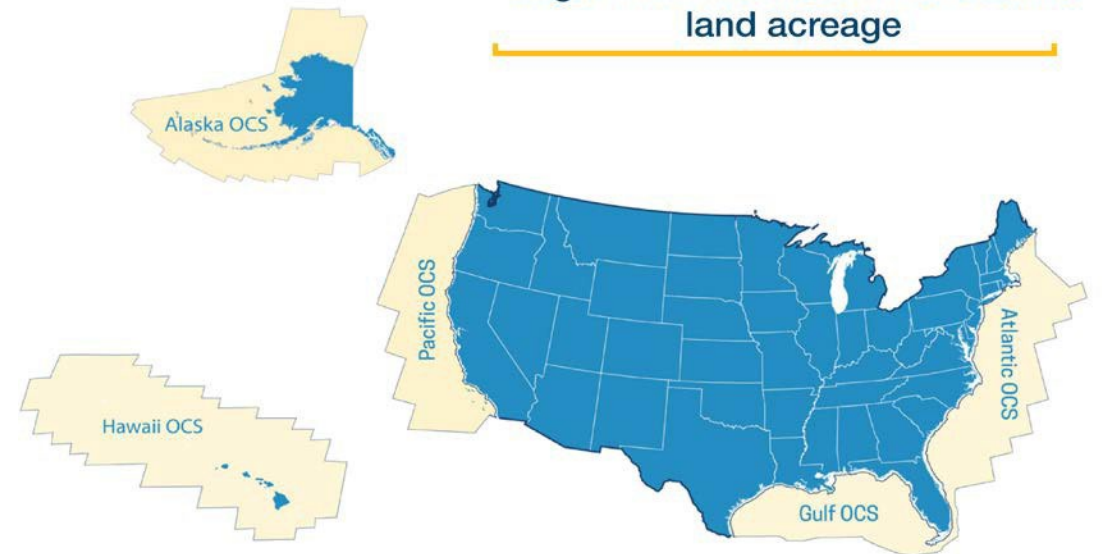
Presentation Outline

- Mission
- Authority
- Hydrogen in context
- Unsolicited lease request & non-competitive lease processes
- Gulf of Mexico offshore wind update
- Q&A

BOEM Mission and Jurisdiction

- The Bureau of Ocean Energy Management (BOEM) manages the responsible development of America's offshore energy, mineral and geological resources in an environmentally and economically responsible way.
- BOEM's primary mission areas are conventional energy, renewable energy, and marine minerals.
- On November 15, 2021, the Infrastructure Investment and Jobs Act gave BOEM leasing authority for Carbon Sequestration.
- Information and assessment underpin all of efforts.

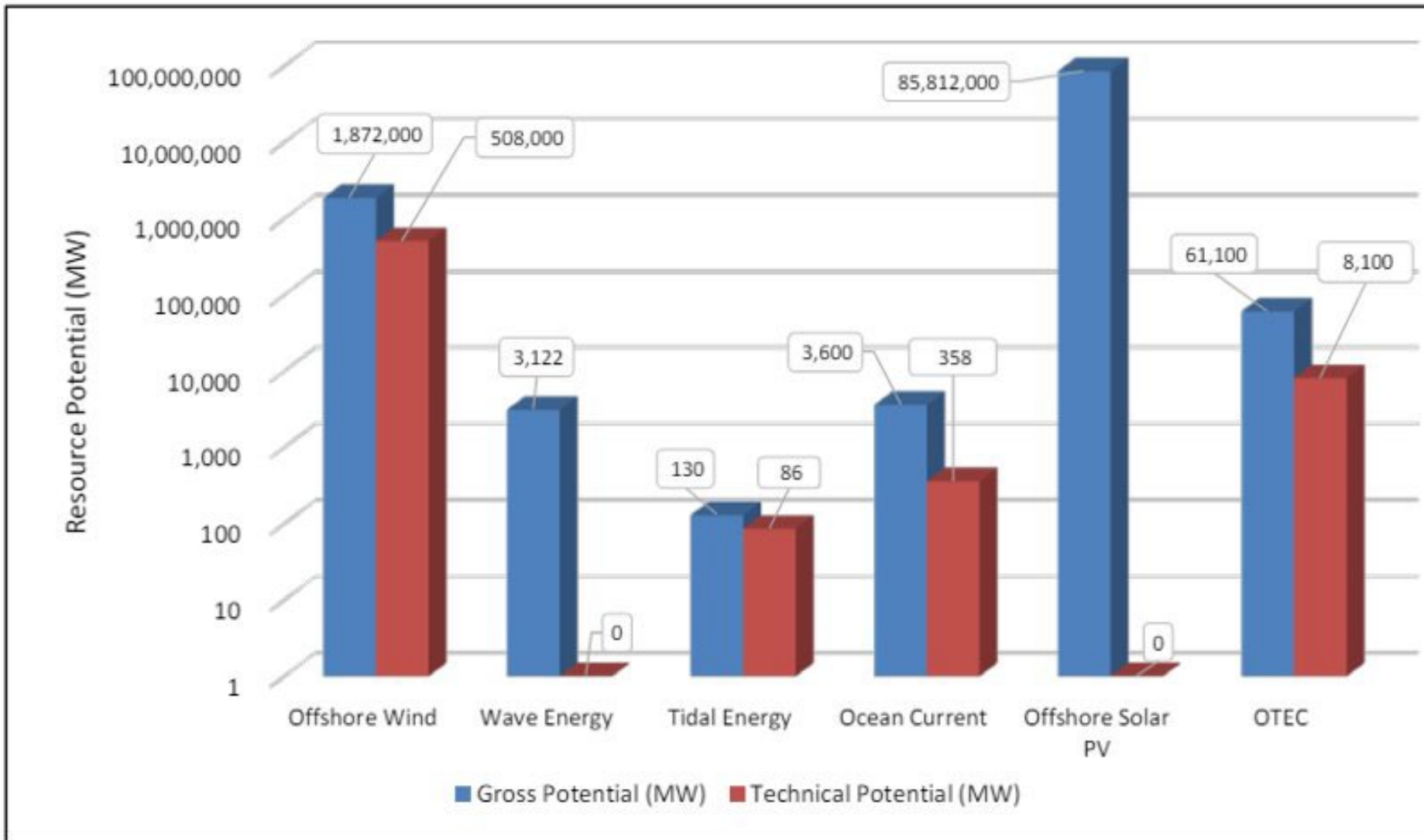
BOEM manages almost
3.2 billion
acres
of the Outer
Continental Shelf,
larger than the size of the nation's
land acreage



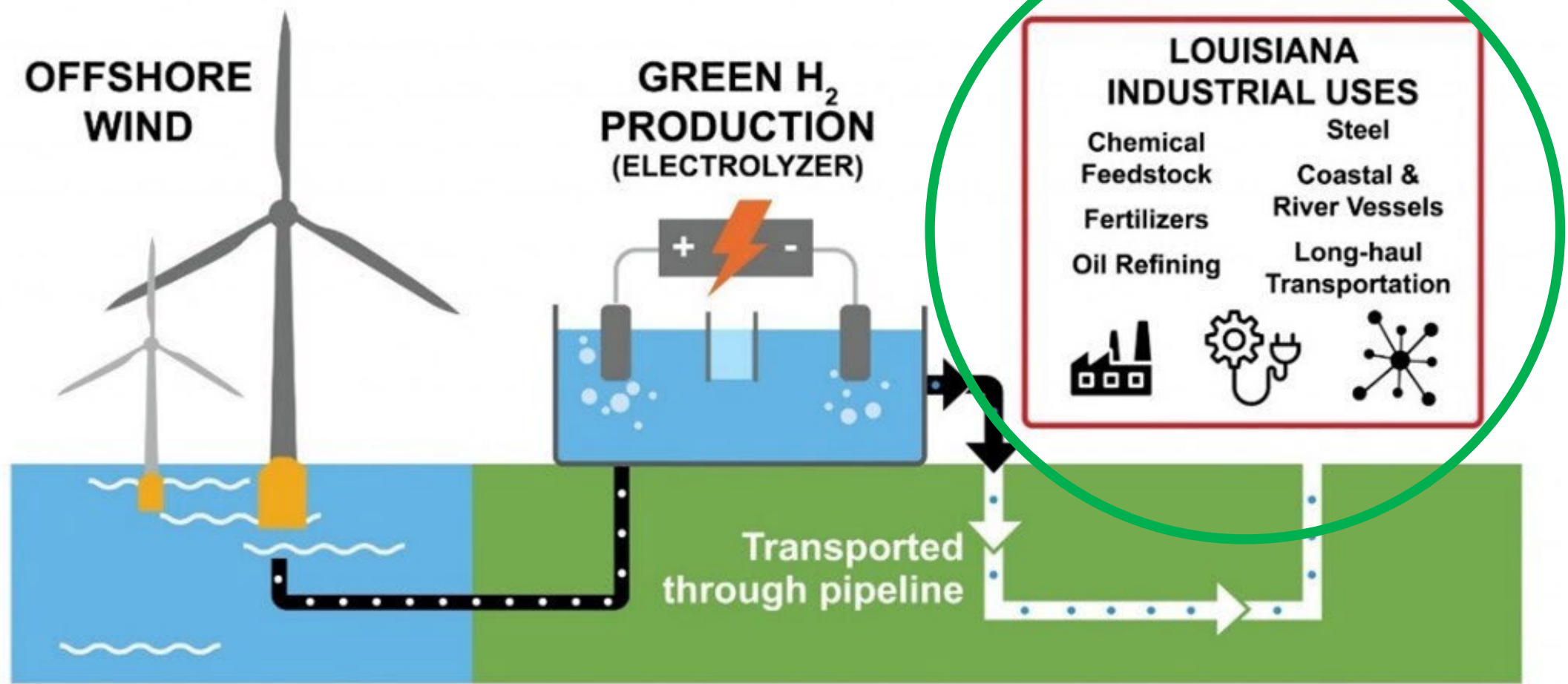
Renewable Energy Authority

- **2005 Energy Policy Act amended OCSLA**
 - Subsection 8(p) states, “The Secretary... may grant a lease, easement, or right-of-way on the Outer Continental Shelf for activities ... if those activities...produce or support production, transportation, storage, or transmission of energy **from sources other than oil and gas;**”
- **2009 BOEM Renewable Energy Regulations Finalized**
 - Title 30 Chapter V Subchapter B
 - Part 585 Renewable Energy
 - Part 586 Alternate Use of Existing Facilities
- **November 2021 Bipartisan Infrastructure Law**
 - “the use of hydrogen resources of the United States promotes energy security and resilience and provides economic value and environmental benefit for diverse applications across multiple sectors of the economy.”
- **2024 Modernization Rule**

Gross and technical offshore renewable energy potential for the Gulf of Mexico (GOM) by technology



Offshore Hydrogen – Why Gulf of Mexico?



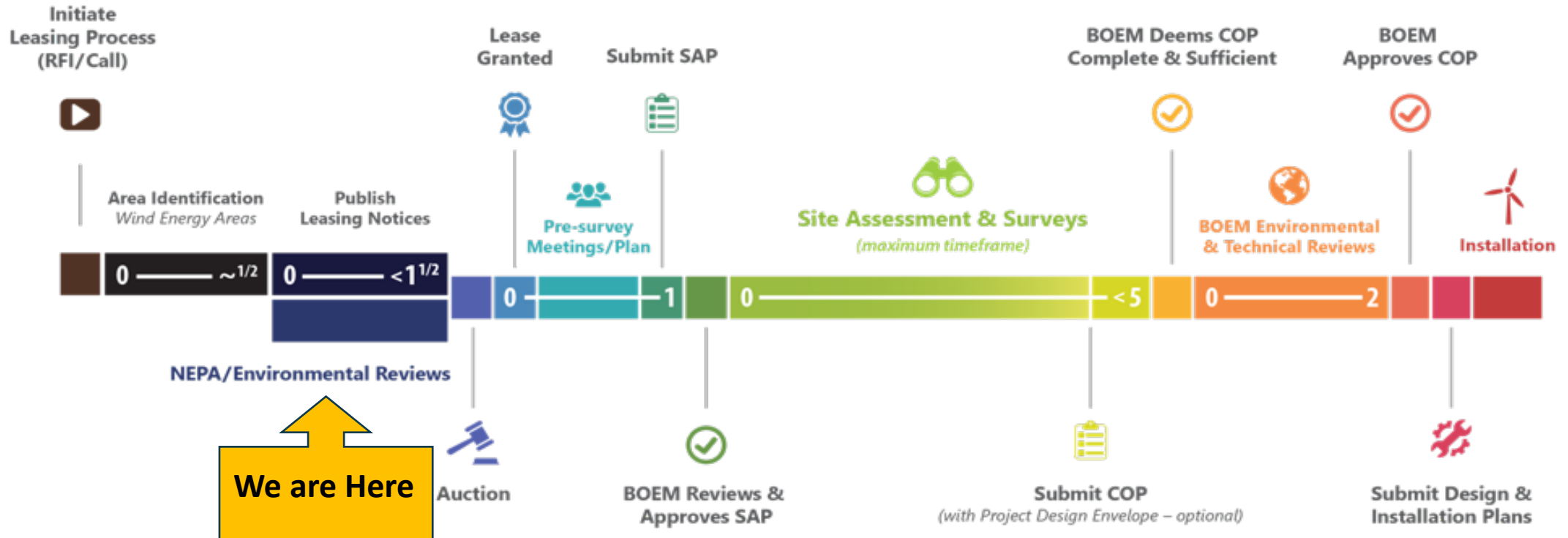
Leasing and Development Process

[Planning & Analysis]

[Leasing]

[Site Assessment]

[Construction & Operations]



Environmental Assessment and consultations

- **Analysis ONLY covers the impacts of issuing leases and the associated site assessment and site characterization activities**
 - Meteorological (met) buoys
 - Vessel trips
 - Geological and biological surveys
- **Analysis does NOT include**
 - Specific project layouts
 - Cable routes for specific projects
 - Visual impacts of a project
 - Wind Energy Area (WEA) identification
- **Analysis of *SPECIFIC* projects**
 - Covered later in the process
 - After a lease is obtained and project plan submitted
 - Additional opportunities for engagement and consultation



Example of a meteorological (met) buoy

Source: National Data Buoy Center, 2012

Hydrogen Discussion Summary Points

- Early Stages
 - No lease with the new language
 - 5-10 years before construction ops plan
- Continue collaboration
- BOEM Gulf of Mexico regional office has submitted a study profile to conduct a comprehensive literature review on the environmental impacts of green hydrogen production from offshore wind
 - Fisheries Council may want to submit idea or concepts for studies
- BOEM collaborating with DOE and other countries (UK and Denmark) to better understand best practices and environmental impacts
 - [Master Thesis Mart van der Linden.pdf \(uu.nl\)](#)



Overview of the Noncompetitive Lease Award Process



Note: BOEM has full discretion to advance or discontinue the application. This icon indicates that BOEM may choose to move forward or terminate the request at this stage.

BOEM publishes a **Request for Competitive Interest (RFCI)** to the Federal Register

45-day public comment period

No competitive interest received during RFCI comment period



Determination of No Competitive Interest (DNCI) published to the Federal Register

BOEM conducts a **NEPA analysis**. This analysis includes site assessment and site characterization.



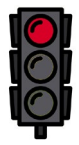
Company must submit consistency certification and necessary data/information to the applicable CZMA agency and BOEM.

BOEM consults and reviews the unsolicited request with affected **Federal agencies, State and local governments, and Indigenous Tribes.**



After completing the review of your lease request, **BOEM may decide to offer you a noncompetitive lease.**
If a lease is offered, all lease requirements (consultations, communication plans, survey plans, and COP) must be met.

Competitive interest received during RFCI comment period



BOEM initiates the Competitive Lease Award Process
BOEM closes the unsolicited lease request

NEPA Considerations and Environmental Consultations

NEPA Considerations

- Environmental Assessments (EAs) of this nature typically take **up to 12 months** to complete.
 - BOEM assumes the EA will be for **site characterization and site assessment activities ONLY**
 - BOEM may also need 6 to 12 months of pre-planning, once we know the proposed action, to create a scenario, identify the scope of the analysis, and coordinate public scoping announcements.
 - If significant impacts found, BOEM would have to prepare an EIS and could take up to an additional two years to complete an EIS.

Environmental Consultations

- Environmental consultations (e.g., Government-to-Government, Endangered Species Act, Essential Fish Habitat, Coastal Zone Management Act, and the National Historic Preservation Act consultations) must be complete before any activities may begin. BOEM will need 6-12 months of pre-planning and roughly 12 months to conduct the consultations.
 - Timeline could expand depending on the timing and location of the proposed action and consulting agencies'/parties' timelines.
 - BOEM assumes the consultations will be for **lease issuance, site characterization, and site assessment activities ONLY**.
 - This assumes that if there is no competitive interest, the potential lessee would provide detailed information about the proposed action, including site assessment and site characterization activities and other detailed information BOEM may need to support the development of the scenario.

These processes could take up to 18-24 months to complete if no significant impacts found.





GOMW-1 Results

GOMW-1 was held on August 29, 2023

- Three lease areas totaling 301,746 acres were auctioned
- One lease area off of Lake Charles, LA received a high bid of \$5.6 million
- The winner Lease OCS-G 37334 was RWE Offshore US Gulf, LLC which became effective on November 1, 2023
 - RWE has submitted the Agency Communication Plan, the Fisheries Communication Plan and the Native American Tribal Communication Plan



LEASE AREA

Winner of the First Gulf of Mexico Offshore Wind Energy Lease Area

OCS-G 37334	RWE Offshore US Gulf, LLC	\$5,600,000
--------------------	----------------------------------	--------------------



DEVELOPABLE ACRES

102,480



INSTALLATION CAPACITY MW¹

1,244



POWER PRODUCTION (MWh)²

4,358,976



HOMES POWERED³

435,400



MINIMUM DEPTH

10 Meters



MAXIMUM DEPTH

25 Meters

BOEM

Bureau of Ocean Energy Management

Notes:

¹ Megawatts (MW) based on 3MW turbines

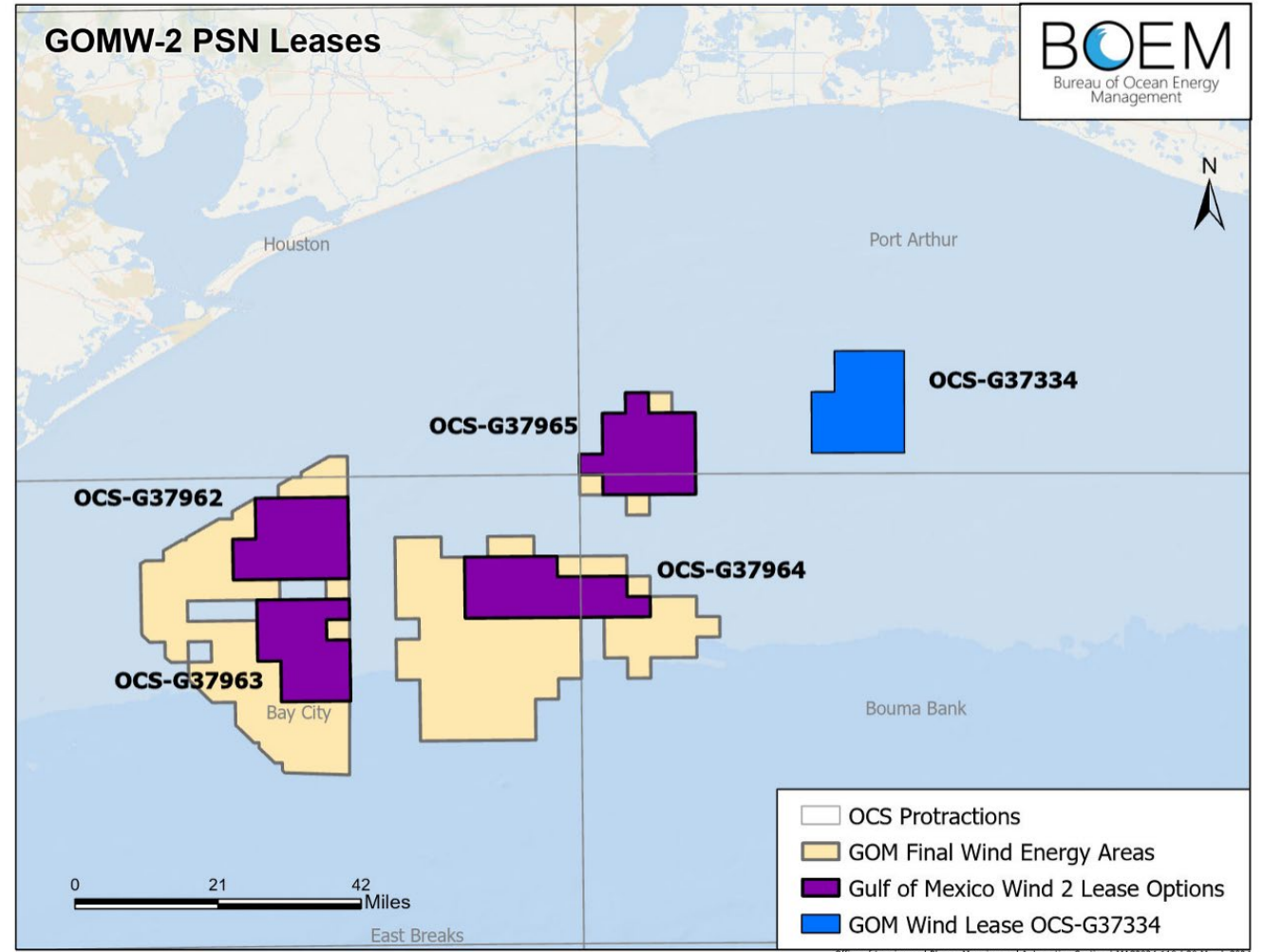
² Formula = Capacity (MW) * 5000 (hrs/yr) * 24 (capacity factor)

³ Based upon 200 homes per MW

GOMW-2 Proposed Sale Notice

Published March 21, 2024

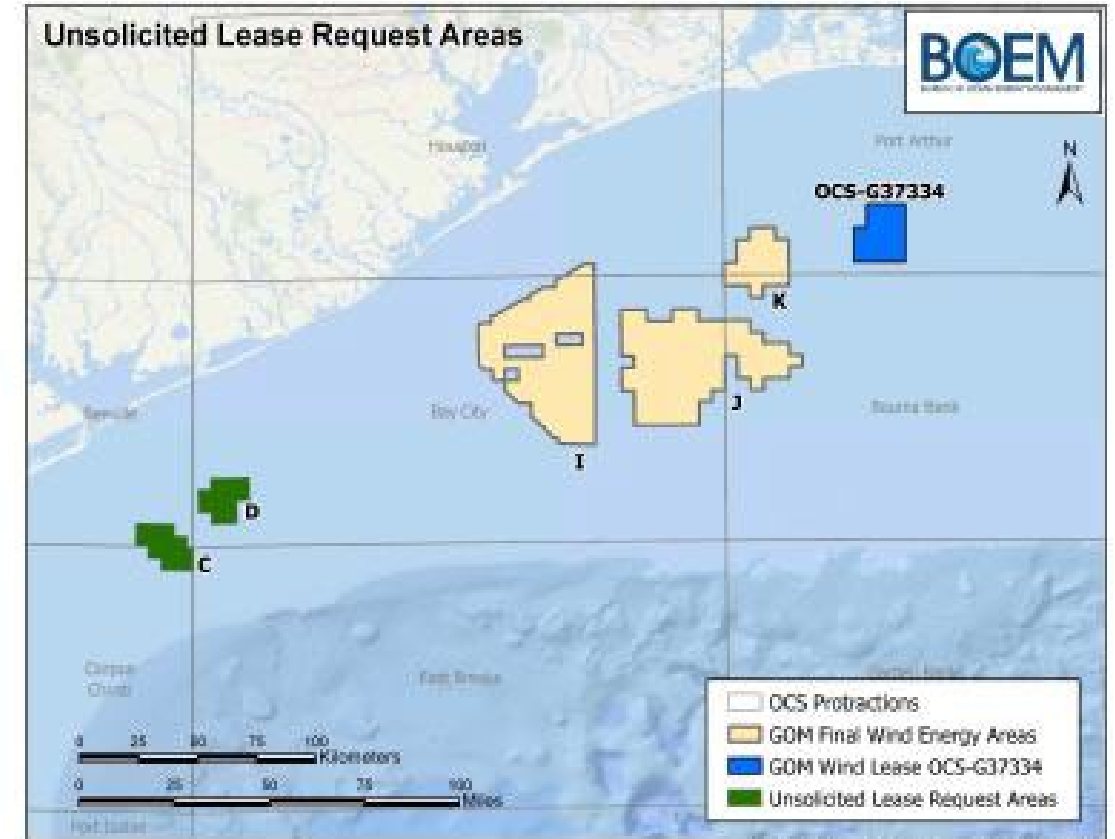
- Comment Period closed May 20, 2024
- Received 24 comments
 - Gulf of Mexico Fisheries Management Council
 - NOAA
 - Texas GLO
 - Southern Shrimp Alliance
 - ACP
 - Louisiana State Senators
- PSN comment responses are published on the BOEM website.
- July 2024 - GOMW-2 wind auction cancelled.





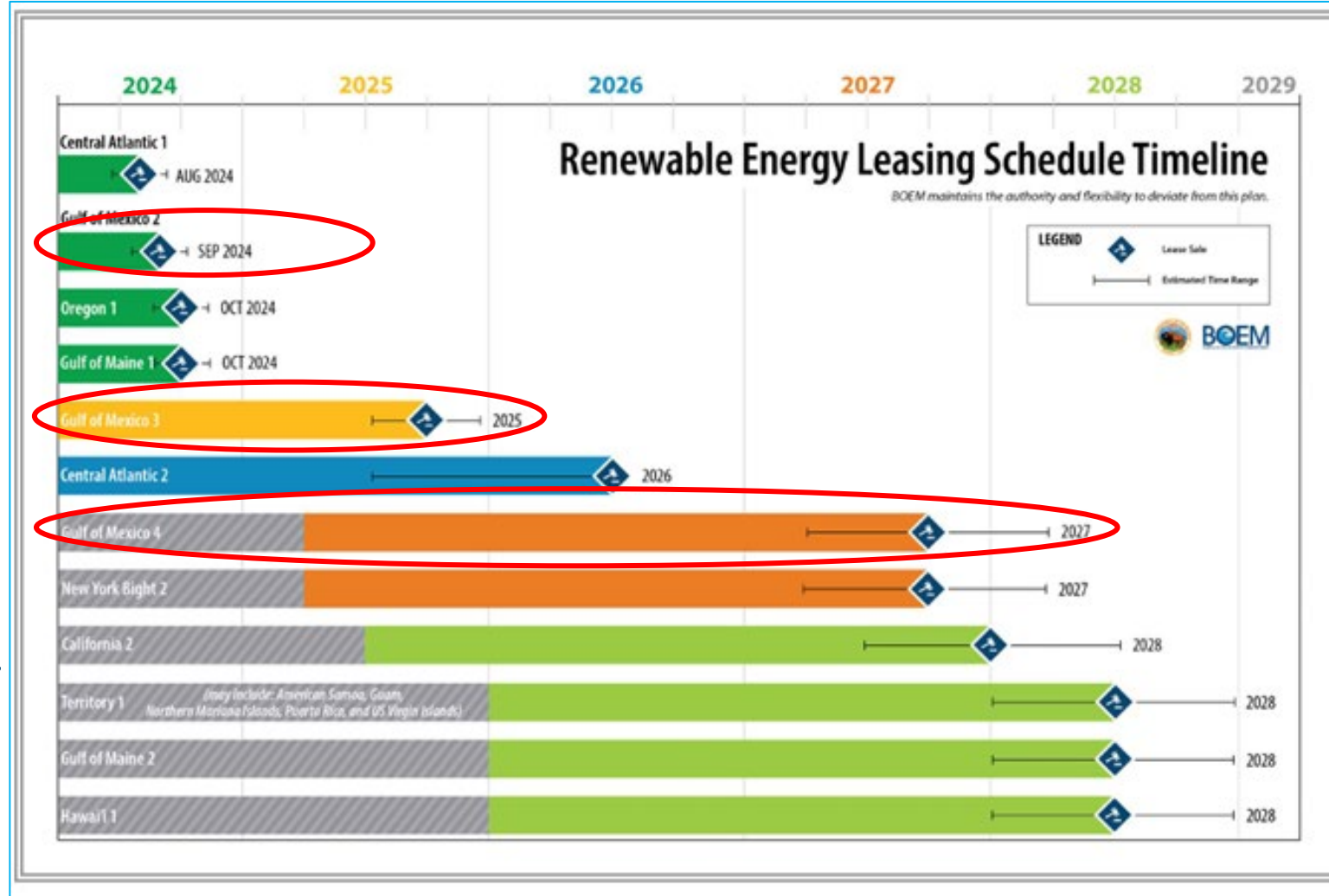
Unsolicited Lease Request for WEA Options C and D

- An unsolicited lease request was received from Hecate Energy Gulf Wind LLC for WEA Options C and D on February 16, 2024
- A Request for Competitive Interest (RFCI) for these areas was published in the *Federal Register* on July 29, 2024
 - The 45-day comment period closed on September 12, 2024
 - 17 comments were received
 - One expression of competitive interest was received
 - BOEM is currently reviewing the submission to determine if competitive interest exists within WEA Options C and D



Next Steps

- Ongoing outreach and engagement
- New 5-year leasing schedule
- DOE Published a GOM study
 - [Gulf of Mexico Offshore Wind Transmission - Literature Review and Gaps Analysis: Environmental Considerations, Community Readiness, and Infrastructure \(nrel.gov\)](#)
- Updating NCCOS siting model
- GOMW-3 draft WEAs
- Workshop planning - transmission workshop -DOE/NREL/NCCOS/BOEM – Jan/Feb 2024
- LA Wind Week Jan 2024
- Planning for GOMW-3.



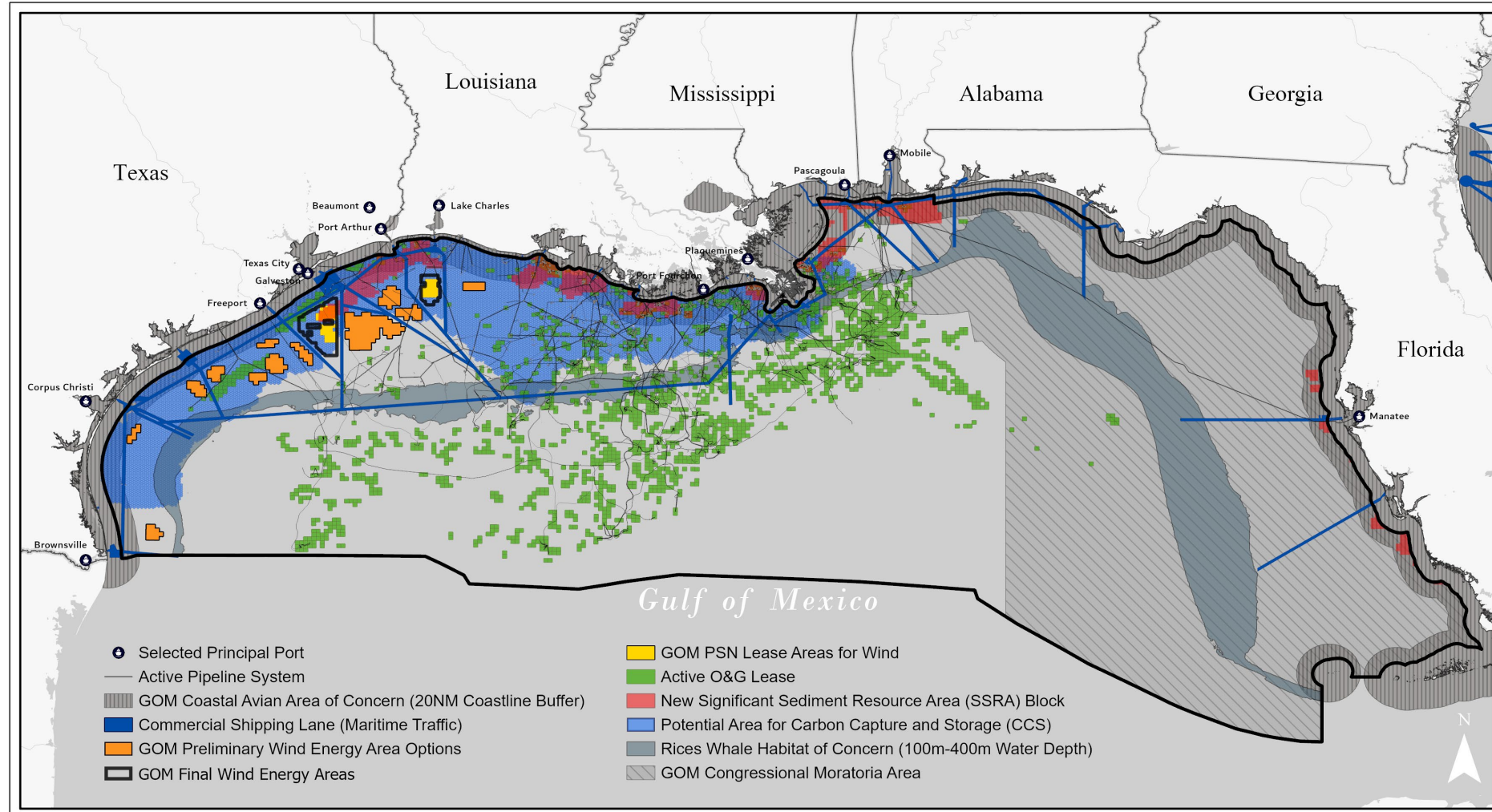
The Gulf is a Mature Energy, Multiple Use Basin

BOEM's & BSEE's Authorities:

- Conventional Energy
- Marine Minerals
- Renewable Energy
- Carbon Sequestration
- *Hydrogen*

Other Users & Resources!

- Fisheries
- Ecosystem Services
- Transportation & Shipping
- Recreation
- Defense / Security





BOEM.gov



Lissa Lyncker– lissa.lyncker@boem.gov - (504) 401-8544